

## March 12, 2020 Partners Working Group Call

Attendance: Cliff Duke, Mike Dietze, Mike SanClements, Kathy Gerst, Kira Sullivan-Wiley, Jody Peters

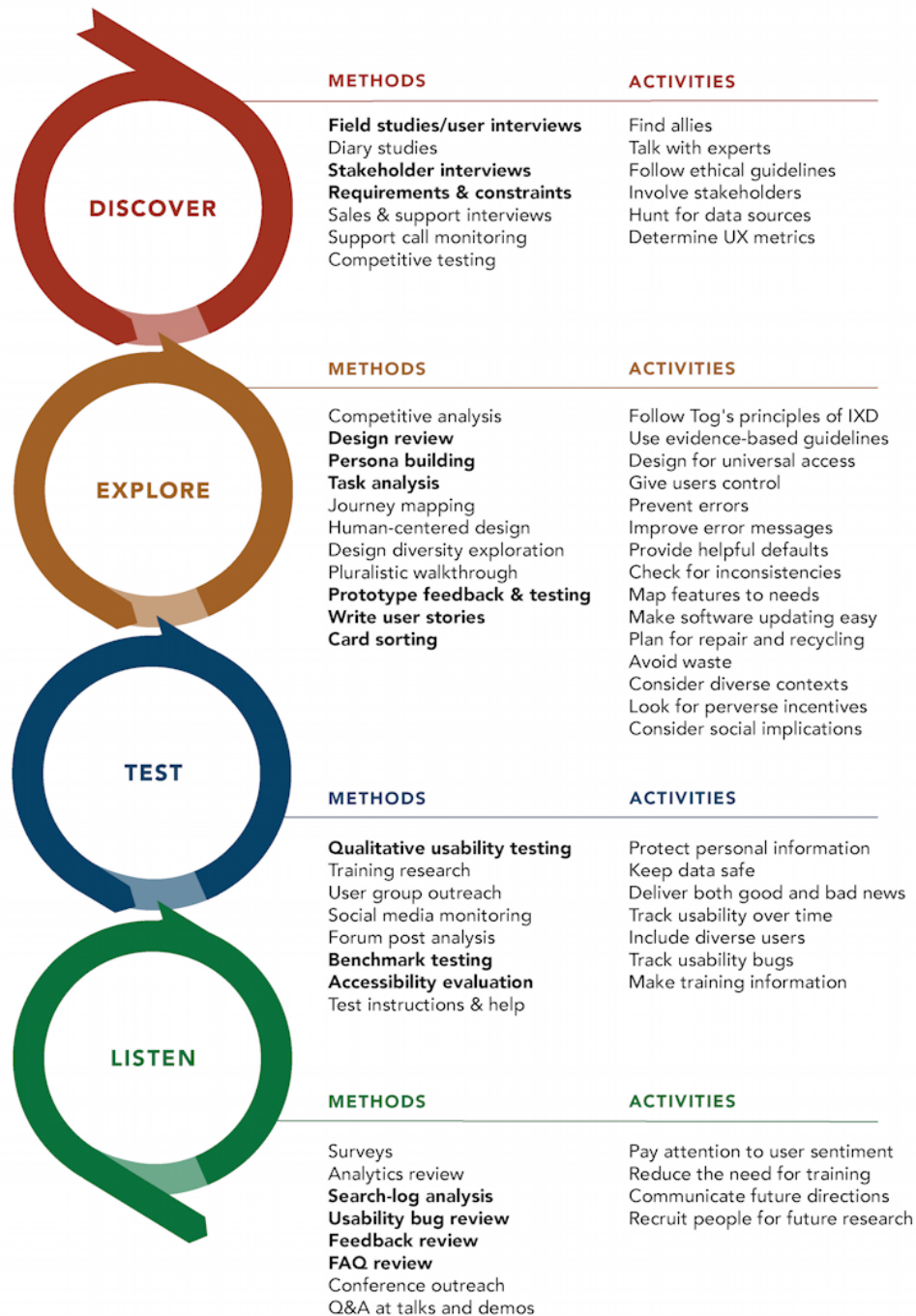
### Agenda

- Quinn - RCN Prep. Quinn is not available for this meeting but hopes to attend the next one
- Terms of Reference and Work Plan
  - Suggestion: Remind people before the call to look over the ToR. Discuss it during the call. Then provide a week for final comments and then send out for ratification with simple majority
  - Would be good to define "Partners". NEON and NPN are partners. Want to put ecological forecasters and partners on the same footing. Have that context throughout. Want to have more inclusive language.
  - Tricky - what is internal and what is external? Who is the "we".
    - Launched EFI with the idea that membership includes individuals and organizations. Want partners involved with the organization itself.
    - One distinction - not all users of forecasts will want to be involved with the production forecasts. They may be interested in being involved in co-production in a locally relevant product, but may not care to be involved with production of forecasts that will be used at the large scale
    - There isn't a line that would say you are a stakeholder, not a partner
    - EFI is a community so in whatever way it people want to get involved is good
    - NPN has had struggles to figure out who is part of the network and for EFI could imagine that at some point we will want to consider who the community connects with in big or small ways
    - Good to let people to self-select. If people aren't interested they won't get involved
    - While the founding members were mainly (but not all) academic, if EFI is going to succeed we can't have all academics
    - With self-selecting don't want people to say "this isn't for me" because they don't look like me (they all look like scientists, etc)
    - Want the language in the Terms of Reference to reflect inclusive
    - Want any outward-facing material/branding material is inclusive with a goal to make the group welcoming to anyone that wants to join.
    - Partners vs community members - is there a difference
    - Example from NEON - partner with phenocam network because they share data with them. While the community is anyone who uses the data
    - Need a definition of Partner
    - Difference between bullet 1 and 2 is audience. Promote collaboration within community vs promoting connections to outside the community
    - Attract new stakeholder

- What is internal to EFI is evolving. Whoever is “in” will be a growing community
    - Let people know that they can have varying levels of participation.
    - Point 1 - foster collaboration. Bringing in the awareness. Teaching scientists how to be good partners.
    - Everyone thinks of Partners in different ways. A natural resources manager has scientists as partners. NPN has a number of different partners
    - Organizational partners was the originally idea
    - Mike’s example - expect that for industry we are more likely to engage with Climate Corp as a partner organization rather than bringing in farmers who are Climate Corps customers
    - EFI’s overarching mission is to build/support a community of practice. . There are many potential partners that are able to help build that community
  - 3rd bullet now is identifying the needs of partners. Perhaps we don’t need bullets 1 and 3 - combine them.
  - The original idea of “Knowledge Transfer” is the bidirectional transfer of forecasts in a co-production mode. Thinking about the supporting research to operation transitions. Also technology transfer - not just the transfer of forecasts, but also the transfer of CI and tools that EFI is developing. To begin with we have a number of standards that EFI is working on and want to get enough feedback from partners to make sure the standards work for people outside of academia
  - Work Plan
    - Compiling a list of forecast opportunities. Kira’s survey will give us a start on this and from the last call we won’t share the contact information for people publically
    - Technical Readiness is something we have discussed across groups, but no one group has taken the lead on this.
      - Is NOAA/USGS’s technical readiness protocols adequate? Perhaps they are adequate for technical readiness, but they may not be sufficient to represent the stages of co-production
    - **Kira will clean up the Terms of Reference and then we’ll have a comments period. Then for next call we can start making these more actionable**
- Kira’s Survey Update
  - Use the password: EFIBetatest123
  - Short-term goal - getting the survey ready to send out
  - Long-term goal - Determine how to create a database to allow EFI members to network, but balance that with not sharing individual’s contact information broadly. Or be sure people are willing to share their contact information.

- User Experience Image – Chris has shared this, but hasn't gotten a chance to talk to his colleague at NOAA at what is being conveyed and how they use it

## UX ACTIVITIES IN THE PRODUCT & SERVICE DESIGN CYCLE



*Bold methods are some of the most commonly used.*